



DRIVING CARRIER ETHERNET ACCESS

Data Sheet

Metrobility® WebBeacon

Superior Web-based Network Management



Product Highlights

- Embedded in the Metrobility management line card
- Supports the complete line of Metrobility services line cards and interface line cards
- Detailed views of:
 - System information
 - Chassis monitoring
 - Management module monitoring
 - Console logs
 - Trap log
- Interface fields for:
 - Device configuration
 - Module configuration
 - Trap configuration

The Metrobility® WebBeacon Element Management System by Telco Systems® is a browser-based element and service provisioning software enabled through an embedded kernel which resides on the management card. WebBeacon provides an efficient, user-friendly way to configure and manage all Metrobility chassis installed on a single network. The network administrator can use WebBeacon as an alternative to the CLI typically used to configure and operate network devices.

Using the WebBeacon EMS, network managers can access individual managed devices remotely, adjust operating parameters quickly and even switch hardware set-

tings from any location at any time. All platform configuration updates, maintenance, and diagnostics can be performed remotely through a web browser. User-enabled traps based on extensive real-time MIB-II and Metrobility-specific MIB statistics — including alarm thresholds and notification procedures — enable early problem identification, fast fault isolation and proactive management to prevent problems before they affect end users.

The WebBeacon EMS supports complete remote monitoring and control for all of the Metrobility line cards when configured in a chassis with a R502 management card.

Chassis Details

Chassis Details	
Stack Location	1
Description	17 Slot Chassis 19"
Name	Region 1
Number of I/O Slots	17
Number of PS Sets	2
Manufacture Date	01/22/01
Revision Number	A
Asset ID	
Physical Name	Chassis
Part Number	R5000-17HS
Serial Number	123456
Uptime	46 days 17:45:28.17
Average Temperature	91°F (33° C)
Module 1 (Maximum)	95°F (35° C)
Module 17 (Minimum)	90°F (32° C)

Module Details

Module Details	
Location	1-1
Name	Module1
Type	Access Line Card
Asset ID	
Description	100M TX to FX SM S/P
Version	A
Part Number	R231-14
Serial Number	A005021309
Manufacture Date	09/05/01
Module State	Enabled
Diagnostic Status	Good
Number of Ports	2
Number of Slots	1
Uptime	46 days 17:50:20.02
Link Loss Carry Forward	Disabled
Write Protect	Read/Write
FIC Firmware Revision	2
FPGA Revision	1
Temperature	Progress
Current	95°F (35° C)
Maximum	92°F (34° C)

Network Statistics

Network Statistics						
Interface						
IP	Address	Up	Down	Up	Down	Over
1	190.102.142.20	1252773	0	171656	0	0
2	190.102.142.17	0	0	0	0	0
3	190.102.142.1	0	0	0	0	0

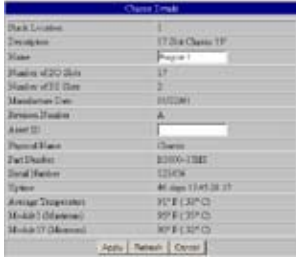
Trap Log

Date	Time	Severity	Summary
12/19/2002	11:24:11	TRAP	Ethernet Port Link Status Change Name=Port2_1_1, Status=1
12/19/2002	11:24:11	TRAP	Ethernet Port Link Status Change Name=Port1_1_1, Status=1
12/19/2002	11:24:11	TRAP	Ethernet Port Link Status Change Name=Port5_2_1_1, Status=1
12/19/2002	11:24:11	TRAP	Ethernet Port Link Status Change Name=Port1_2_1_1, Status=1
1/3/2003	09:51:48	TRAP	Ethernet Port Link Status Change Name=Port5_1_1, Status=2
1/3/2003	09:51:48	TRAP	Ethernet Port Link Status Change Name=Port5_2_1_1, Status=2
1/3/2003	09:51:48	TRAP	Ethernet Port Link Status Change Name=Port3_1_1, Status=2
1/3/2003	09:51:48	TRAP	Ethernet Port Link Status Change Name=Port3_2_1_1, Status=2

WebBeacon Features and Statistical Information

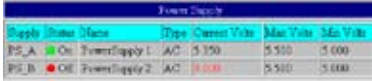
Chassis Information

Part Number
Serial Number
Date of Manufacture
Revision
Description



Chassis Status

Power Status
Power Output Voltage
Platform Temperature
Platform Reset



Port Information

Name
Type
Speed
Duplex mode
Auto-negotiation status



Port Status

Link status
Link activity



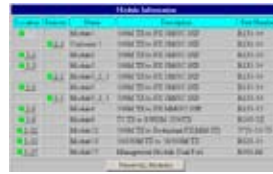
Interface Line Card Status/Control

Backpressure
Full Duplex Flow Control
Diagnostic Status
Auto-Recovery Management
Image/Memory Information
Temperature / voltage readings
Telnet, FTP, HTTP server controls
Redundancy
Secondary Switchover
Active Port
Auto Revert
Link Pulse
Transmission
Mode Control
SONAR



Alarms

Cold Start
Warm Start
Link Up
Link Down
Authentication Failure
Configuration Change
Platform Reset
Line Card Reset
Port Reset
Temp Out-of-Range
Power Supply Out-of-Range
Optical Power (Access Line Card)
Power Supply On/Off
Module/Power Supply Inserted
Module/Power Supply Removed
Redundant Switchover
Far End Fault
Remote Fault Alarm (Ethernet and TDM)
Port Speed Change
Port Link State Change (Ethernet and SONET)



Active Control

Network Select/Dynamic Recovery Modes
Link Loss Carry Forward
Link Loss Return
Auto Revert to Primary, Transmit on Both, Link on Both SONAR
Port/Line Card Name
Chassis Name, Location and Contact Information
IP Address
Alarm Threshold Setting
Reset Platform
Subnet Mask
Default Gateway
Telnet to Console Commands
Port State
Auto-Negotiation
Loopback
Backpressure,
Speed
Duplex

Access Line Card or Services Line Card Status/Control (dependent on card type)

Packet Types
Packet Sizes
Dropped Events
Error Packets
Multicast Packet
Broadcast Packet
Dynamic Bandwidth Provisioning
Loopback
Link Loss Return
Remote State
Port State
Optical Tx-Rx Power
Link Loss Carry Forward
Write Protection
Auto-Negotiation
Link Loss Carry Forward (SLC)
Back Pressure (SLC)
Port Flow control (SLC)
Port Management (SLC)



Ordering Information

Part Number	Description
R502-M	Management Card (One DB-15 and two RJ-45 connectors) WebBeacon is embedded in the Metrobility R502-M Management Line Card
R104-11	10/100 TX 4- Port Chassis Stacking Line Card (four RJ-45 connectors)
Hardware requirements	
R5000-17HS	17-slot chassis, rack-mountable
R1000-xxx	2-slot chassis, rack-mountable
R400-02HS-1A	2-slot chassis

Features and Benefits

- Proactive network management from any supported network browser, such as Internet Explorer or Netscape
- Comprehensive monitoring and control for proactive management



U.S. ■ EUROPE ■ APAC

www.telco.com

Int'l Headquarters

Tel: +972-9-866-2525
Fax: +972-9-866-2500
sales.emea@telco.com
http://www.telco.com

US Headquarters

Tel: +1-800-221-2849
Fax: +1-781-551-0538
sales@telco.com
http://www.telco.com

Germany

Tel: +49-241-4635490
Fax: +49-241-4635491
info@batm.de
http://www.telco.com

France

Tel: +33 (0) 1-56 7-1 2-7 73
Fax: +33 (0) 1-43 7-7 1-7 80
support@batm.fr
http://www.batm.fr

Asia Pacific

Tel: +65-6725-9901
Fax: +65-6725-9889
info.apac@telco.com
http://www.telco.com

Japan

Tel: +81(3)5211-1705
Fax: +81(3)5510-9131
Info.jp@telco.com
http://www.telco.com