



DRIVING CARRIER ETHERNET ACCESS

Data Sheet

Metrobility® Ethernet Media Converters

Flexible 10Mbps and 100Mbps media, speed, and distance solutions



10Mbps R111 & 2111
100Mbps R141 & 2141

The Ethernet and Fast Ethernet media converters by Telco Systems offer versatile speed, media, and distance to cost-effectively distribute fiber optic connections. These units provide seamless connectivity within the LAN, or between the LAN and public or private networks. These Metrobility® devices are available as a preconfigured 10Mbps unit, a selectable 10 or 100Mbps unit, or an auto-negotiating 10/100Mbps unit.

These mixed-media devices offer seamless integration of copper and fiber connections providing full signal restoration for accurate data transmission and maximum cable length support.

The interface line cards are supported in all of the Metrobility platforms and can be managed when configured with a R502-M management card. The standalone options utilize a rugged fabrication to offer superior reliability for the most demanding environments or as a cost-effective Delta Class with a lightweight, impact resistant enclosure. Each standalone is equipped with an external, universal AC power supply.

10Mbps – Preconfigured

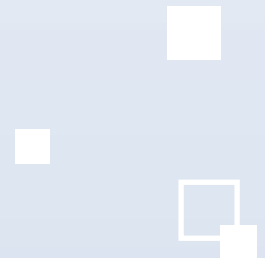
The Metrobility R111 and 2111 preconfigured media converters offer transparent integration of fiber optic connectivity or copper-to-coaxial integration for 10Mbps Ethernet networks.

10 and/or 100Mbps – DIP-switch or software settable

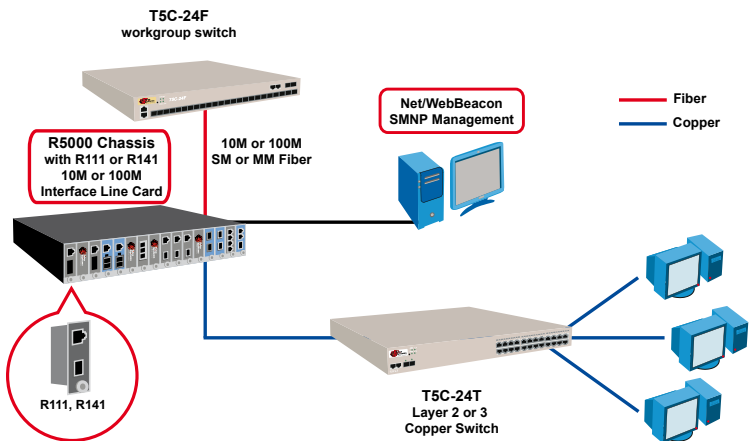
The Metrobility R141 line card and 2141 standalone is a transparent two-port, copper-to-fiber media converter that can be set to either 10Mbps on both ports or 100Mbps on both ports. The R141 line card is supported in all Metrobility chassis options. When configured with a management card (R502-M), it may be locally managed through a web browser or with NetBeacon® ESP Element Manager■

Product Highlights

- ❖ Complete range of fiber optic connector types provide network design flexibility
- ❖ Managed option - NetBeacon® and WebBeacon™ - when configured with a management card in a Metrobility platform
- ❖ High-quality, reliable design lowers long term cost of ownership
- ❖ Full signal restoration - with low bit delay - allows for maximum segment length
- ❖ Fully IEEE 802.3 Compliant ensures compatibility with other vendors' equipment for flexible connectivity
- ❖ Single-strand, bi-directional wavelength multiplexing (BWDM) option
- ❖ Interoperates with half-duplex or full-duplex mode devices
- ❖ Class B certified models



Metrobility® Ethernet Media Converters



Key Applications

- Copper-to-fiber conversion
- Distance extension of 2km, 20km, 40km and 100km

Ordering Information

Part Number	Description	Connector	Distance
Line Card Standalone			
10Mbps Pre-Configured			
R111-13-B	2111-13-B 10BASE-T to 10BASE-FX (MM)	SC	2km
R111-15-B	2111-15-B 10BASE-T to 10BASE-FX (MM)	ST	2km
10Mbps or 100Mbps Settable			
R141-13	2141-13 10BASE-T to 10BASE-FX or 100BASE-T to 100BASE-FX (MM)	SC	2km
R141-14	2141-14 10BASE-T to 10BASE-FX or 100BASE-T to 100BASE-FX (SM)	SC	20km
R141-15	2141-15 10BASE-T to 10BASE-FX or 100BASE-T to 100BASE-FX (MM)	ST	2km
R141-16	2141-16 10BASE-T to 10BASE-FX or 100BASE-T to 100BASE-FX (SM)	ST	20km
R141-17	2141-17 10BASE-T to 10BASE-FX or 100BASE-T to 100BASE-FX (SM)	SC	40km
R141-1J	2141-1J 10BASE-T to 10BASE-FX or 100BASE-T to 100BASE-FX (SM)	SC	100km
R141-1X *	2141-1X 10BASE-T to 10BASE-FX or 100BASE-T to 100BASE-FX (SM – BWDM) 1550nm/1310nm	SC	20km
R141-1Y *	2141-1Y 10BASE-T to 10BASE-FX or 100BASE-T to 100BASE-FX (SM – BWDM) 1310nm/1550nm	SC	20km

* Must be ordered in pairs (-1X and -1Y). Each end of the link must be configured with a different receive and transmit wavelength.

Specifications

Environmental

Operating Temperature
0°C to 50°C
Operating Humidity
5% to 95% non-condensing
Storage Temperature
-25°C to 70°C

Standards Compliance

IEEE 802.3
IEEE 802.3u

Physical Specifications

Standalone (21xx)

Dimensions 4.8"L x 3.3"W x 1.7"H
12.3cm x 8.3cm x 4.3cm
Weight 1 lb; .45 kg
Power, Universal
90-250V AC 50/60Hz

Safety and EMC Compliance

UL CE
CSA CB
FCC Part 15, Class A (x111)
FCC Part 15, Class B (R141)
EN55022 Class A emissions (x111)
EN55022 Class B emissions (R141)
EN55024: 1998 (immunity)
EN60950 (safety)
ICES-003 Class A emissions (x111)
ICES-003 Class B emissions (R141)
IEC 825-1 Classification
Class 1 Laser Product



U.S. ■ EUROPE ■ APAC

www.telco.com

Int'l Headquarters

Tel: +972-9-866-2525
Fax: +972-9-866-2500
sales.emea@telco.com
<http://www.telco.com>

US Headquarters

Tel: +1-800-221-2849
Fax: +1-781-551-0538
sales@telco.com
<http://www.telco.com>

Germany

Tel: +49-241-4635490
Fax: +49-241-4635491
info@batm.de
<http://www.telco.com>

France

Tel: +33(0)1-567-12-773
Fax: +33(0)1-437-71-780
support@batm.fr
<http://www.batm.fr>

Asia Pacific

Tel: +65-6725-9901
Fax: +65-6725-9889
info.apac@telco.com
<http://www.telco.com>

Japan

Tel: +81(3)5211-1705
Fax: +81(3)5510-9131
Info.jp@telco.com
<http://www.telco.com>